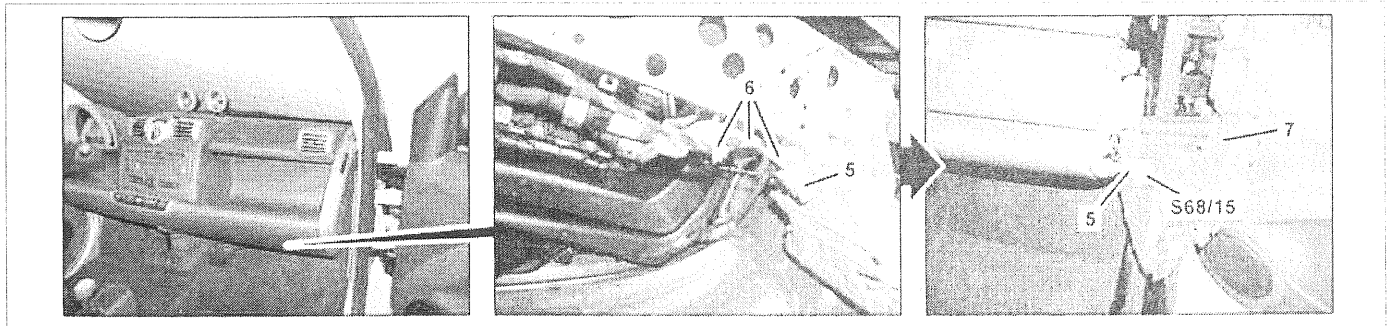


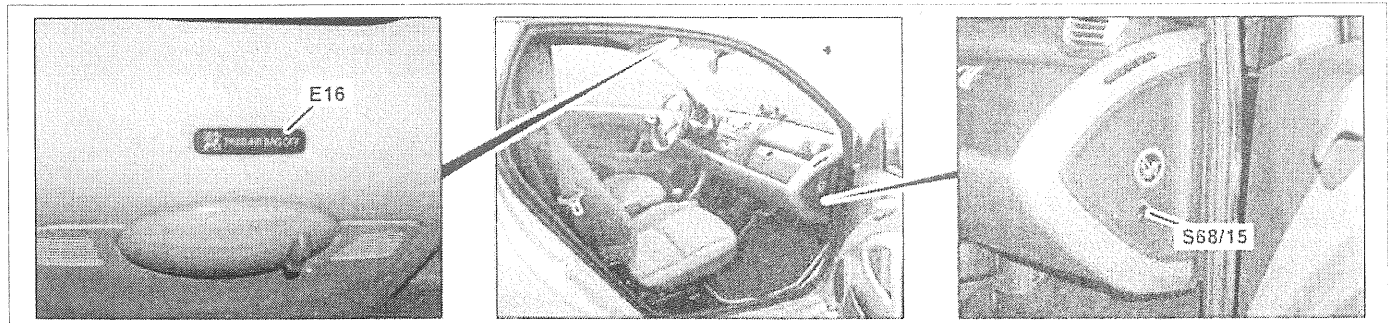
P91.60-3441-07

- |   |                           |   |               |     |                                                            |
|---|---------------------------|---|---------------|-----|------------------------------------------------------------|
| 1 | Front roof frame paneling | 3 | Cover         | E16 | Automatic child seat recognition airbag OFF indicator lamp |
| 2 | Connector                 | 4 | Adhesive tape |     |                                                            |



P91.60-3442-07

- |   |                 |   |               |        |                                      |
|---|-----------------|---|---------------|--------|--------------------------------------|
| 5 | Connector       | 7 | Side paneling | S68/15 | Front passenger airbag cutout switch |
| 6 | Adhesive straps |   |               |        |                                      |



P91.60-3443-07

- |     |                                                            |        |                                      |
|-----|------------------------------------------------------------|--------|--------------------------------------|
| E16 | Automatic child seat recognition airbag OFF indicator lamp | S68/15 | Front passenger airbag cutout switch |
|-----|------------------------------------------------------------|--------|--------------------------------------|

#### Modification notes

12.11.07	Step sequence altered	Steps 12 to 14
----------	-----------------------	----------------

	Remove		
1	Remove side paneling (7) on passenger side	<b>i</b> The side paneling (7) is no longer needed. It will be replaced at a later time with new side paneling (7).	AR68.10-P-1503MCC
2	Remove front roof frame paneling (1)	Model 451.3 Model 451.4	AR68.30-P-4450MCC AR68.30-P-4450MCO
3	Unclip cover (3) with suitable screwdriver and remove.		
	Install		

4	Clip automatic child seat recognition airbag OFF indicator lamp (E16) into front roof frame paneling (1)	<b>i</b> In vehicles up to vehicle identification number WME4513301K063514: Do not use the automatic child seat recognition airbag OFF indicator lamp (E16) included in the scope of delivery, but order and use a new part in accordance with the parts catalog. In vehicles as of vehicle identification number WME4513301K063515: Use the automatic child seat recognition airbag OFF indicator lamp (E16) included in the scope of delivery.	
5	Remove adhesive tape (4) and connect connector (2) to the automatic child seat recognition airbag OFF indicator lamp (E16)		
6	Install front roof frame paneling (1)	Model 451.3 Model 451.4	AR68.30-P-4450MCC AR68.30-P-4450MCO
7	Move front passenger seat toward rear		
8	Remove adhesive tapes (6) and route connector (5) to side paneling (7) on passenger side		
9	Clip front passenger airbag cutout switch (S68/15) into new side paneling (7)		
10	Connect connector (5) to front passenger airbag cutout switch (S68/15)		
11	Install new side paneling (7)		AR68.10-P-1503MCC
12	Add special equipment to the vehicle data card and to the online vehicle data card	<b>i</b> Add code (55Z) Airbag off switch.	
13	Connect STAR DIAGNOSIS and perform SCN coding  Connect STAR DIAGNOSIS and read out fault memory	<b>i</b> After installing the front passenger airbag shutoff switch (S68/15), the SCN coding of the restraint system control unit must be performed.	AD00.00-P-2000-04MCC
14	Check front passenger airbag cutout switch (S68/15) for proper operation	<b>i</b> When the front passenger airbag is switched off, the automatic child seat recognition airbag OFF indicator lamp (E16) in the front roof frame paneling (1) must come on.	

 AD